

Name

Date.....

Catrina Stewart

Architect Profile



Task.

Complete the gap fill using the word bank below.

Catrina’s interest in design began with her parents, who were toy makers. As an A Level student, Katrina studied Maths, Art and Performing Arts. At 17, she moved from Italy to, to study for a Part 1 at The Bartlett, before working as a builder for six months in New Mexico, building low cost, housing called, After studying for a Part 2 at The, Katrina worked at a small architecture practise while also designing a BAFTA winning computer game called Lumino City, alongside graphic designer Luke Whittaker. In 2013, Katrina co-founded Office S&M Architects.

Architects Bartlett Sustainable London

Catrina’s top 3 skills for an Architect...

1

PATIENCE

2

RESILIENCE

3

CONFIDENCE



‘It’s amazing to see your initial drawings being realised’



‘Be open to changes.’



‘The biggest challenge is confidence’



‘Trust in your process’

RESEARCH PROJECT: INSPIRATIONAL CREATIVE

INTRODUCTION TO GAETANO PESCE

Gaetano Pesce is an Italian modernist architect and designer. His design pieces are exhibited in museums around the world including MoMa of New York and Victoria and Albert Museum in London.



TASK 1 Read the introduction to Gaetano Peace above.

TASK 2 Visit Pesce's website to browse his past projects. <http://www.gaetanopesce.com/>

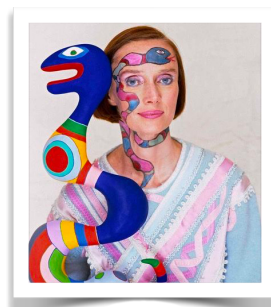
TASK 3 Choose your 3 favourite Pesce projects and create a mood board showcasing imagery of your chosen projects.

Annotate your images with key facts including: Type of project, project location, year created.

RESEARCH PROJECT: INSPIRATIONAL CREATIVE

NIKI DE SAINT PHALLE

Catrina was inspired by French-American artist Niki De Saint Phalle, known for her colourful patterned sculptures paintings and illustrations.



TASK 1 Read the introduction to Niki De Saint Phalle above.

TASK 2 Type the url below into a web browser <http://nikidesaintphalle.org/>

TASK 3 Use your research findings to create an A4 fact file on Niki De Saint Phalle & her creative work. You can use the questions opposite to help you begin.

What are the typical characteristics of De Saint Phalle's sculptural works?

In which country is The Tarot Garden by Niki De Saint Phalle?

Which of De Saint Phalle's sculptural work is exhibited at the Yorkshire Sculpture Park?